



- The simplest workflow
- Best-in-class clinical results
- Truly portable sensor with a small footprint
- Plug and play

Snapshot.
Perfect image. So simple.

Snapshot technical specification

Snapshot			
Technology:	CMOS		
Pixel size:	19µm x19µm		
Sealing:	IP44, CMOS sensor IP67 (watertight)		
Resolution:	26,3 lp/mm theoretical		
Connection:	USB 2.0 High speed		
Imaging software:	CliniView™ XV (USA), CliniView™ 8.0 or later		
	TWAIN driver		
Operating system:	Windows® XP or Vista 32 bit		
DIMENSIONS			
	Sensor size 1	Sensor size 2	
Active area:	1580 x 1050	1916 x 1358	pixels
Active area:	30,0 x 20,0	36,5 x 25,8	mm
	1.18 x 0.79	1.44 x 1.02	inches
Housing:	37 x 26	44 x 31	mm
	1.46 x 1.02	1.73 x 1.22	inches
Sensor cable length:	nominal 40/15.75	nominal 40/15.75	cm/inches
USB cable length:	nominal 3/118.11	nominal 3/118.11	m/inches
DIMENSIONS			
	Sensor unit		
Size:	86 x 25 x 14 mm		
	3.39 x 0.98 x 0.55 inches		
Weight:	120 g/ .26 lbs		

INSTRUMENTARIUM DENTAL develops, manufactures and markets high-tech systems and solutions for dental and maxillo-facial imaging. We work in close co-operation with dental professionals, universities and other research centers in our quest to develop solutions that will meet and exceed the expectations of our customers. As the establisher of panoramic X-ray imaging we are committed to providing high clinical performance while still maintaining simplicity, ease of use and workflow efficiency.

The Instrumentarium Dental product portfolio consists of a full range of premium quality imaging solutions for both intraoral and extraoral imaging. For more detailed information about our products please visit www.instrumentariumdental.com.

Instrumentarium Dental reserves the right to make changes in specifications and features shown herein, or discontinue the product described at any time without notice or obligation. Contact your Instrumentarium Dental Representative for the most current information. CE marked according to Medical Device Directive (MDD) 93/42/EEC. Electrical safety according to IEC 60601-1. Operations comply with ISO 13485:2003, ISO 9001:2000, and ISO 14001:2004.

www.instrumentariumdental.com

Headquarters

Instrumentarium Dental
Nahkelaantie 160
P.O.Box 20
FI-04301 Tuusula
Finland
Tel. +358 45 7882 2000
Fax +358 45 7882 2560

Americas

Instrumentarium Dental Inc.
300 West Edgerton Avenue
Milwaukee, Wisconsin 53207
U.S.A
Tel. +1 414 747 1030, 800 558 6120
Fax +1 414 481 8665

Germany

Instrumentarium Dental GmbH
Schutterstrasse 12
77746 Schutterwald
Germany
Tel. +49 781 28 41 980
Fax +49 781 28 41 9830

France

Instrumentarium Dental S.A.R.L.
P.A. des Petits Carreaux
12 Avenue des Coquelicots
94385 BONNEUIL sur MARNE Cedex, France
Tel. +33 1 41 94 16 10
Fax +33 1 43 77 24 90

Italy

Instrumentarium Dental S.R.L.
Via Forlanini 71,
20033 Desio (MI)
Italy
Tel. +39 0362 331 191
Fax +39 0362 300 067

© 2009 Instrumentarium Dental
72199-1

One shot. Perfect image.
Snapshot intraoral sensors

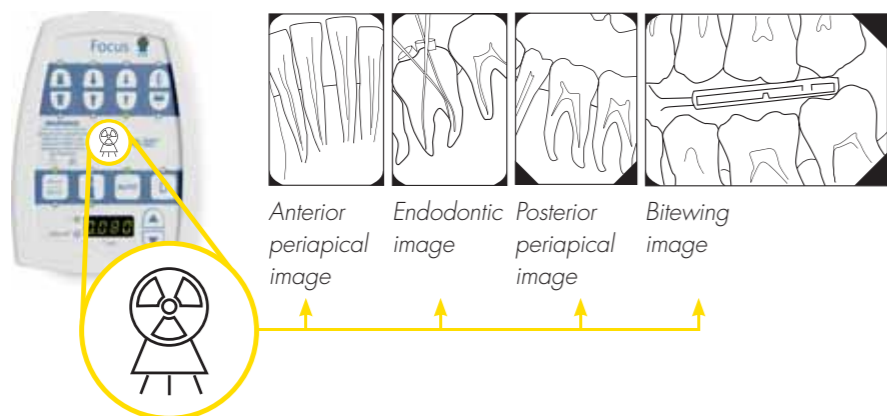


The simplest workflow

Set it and forget it

Take almost every intraoral image with just one X-ray setting. Snapshot's wide dynamic range provides superior images of different parts of the dentition without altering the settings on your X-ray device.

Just press one button.



Simplified capture of multiple images

Snapshot's imaging software is a sophisticated tool for taking an image series (template). The software guides you through the Full Mouth Series and automatically orients the images. Two sizes of sensors can be active at the same time, which allows changing between sensors without interruptions.



Both sizes of sensors simultaneously connected and active.

CliniView™ software automatically populates and activates the next slot in a template.

Auto-orientation sets images automatically into the right position.



Snapshot is compatible with most imaging softwares through its TWAIN driver.

Truly portable sensor with a small footprint

The Snapshot sensor has smart, integrated electronics. There are no separate boxes lying around in limited workspace environments. A convenient wall-mounted storage device provides you a safe and convenient place to store the Snapshot when not in use.

86 mm
3.39 inches



Snapshot Sensor size 1
37 x 26 mm
1.46 x 1.02 inches

Snapshot Sensor size 2
44 x 31 mm
1.73 x 1.22 inches

Film size 2
41 x 31 mm
1.66 x 1.22 inches

Scale 1:1

Ready for use automatically

Snapshot is ready for use just by plugging the USB cable into any computer having a Windows XP or Vista operating system. The sensor is detected automatically and all needed drivers are copied directly from the sensor without user action. This, combined with the absence of a tabletop electronics unit, make sharing the sensor between operatories particularly convenient.

Plug and play!

Transferring Snapshot from one room to another is simpler than ever. Forget separate electronics.

Move the sensor



Plug in the sensor



Best-in-class clinical results

The new, sophisticated Snapshot sensor design produces up to 20 lp/mm true resolution (26,3 lp/mm theoretical). You get razor-sharp images, with the low noise typical of CMOS technology. This provides uncompromised diagnostic visibility and unsurpassed image quality. A wide dynamic range and an anti-blooming CMOS chip ensure successful images time after time.

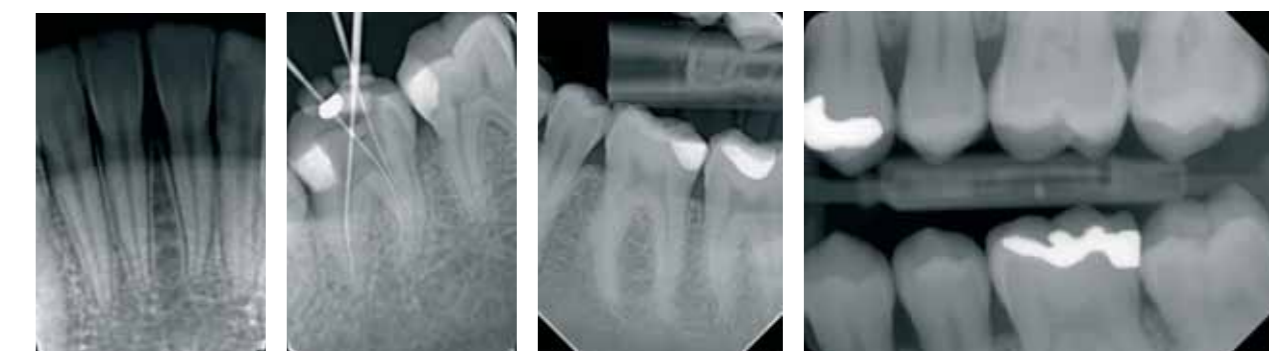
You can distinguish up to 20 lp/mm from an image when using CliniView™ software.



Why CMOS?

- Lower noise ensures razor-sharp images
- Small, 19µm pixel size provides high resolution
- CMOS chip will not bloom even in the event of overexposure

A perfect tool for all intraoral purposes



Superior resolution in periapical region ensures accurate diagnosis.

Precise location of file can be seen during endodontic treatment.

The difference between enamel and dentin stands out sharply.

Excellent contrast and sharpness, essential for diagnosing caries.