



INSTRUMENTARIUM

Snapshot

One shot. Perfect image.

# Snapshot intraoral sensors



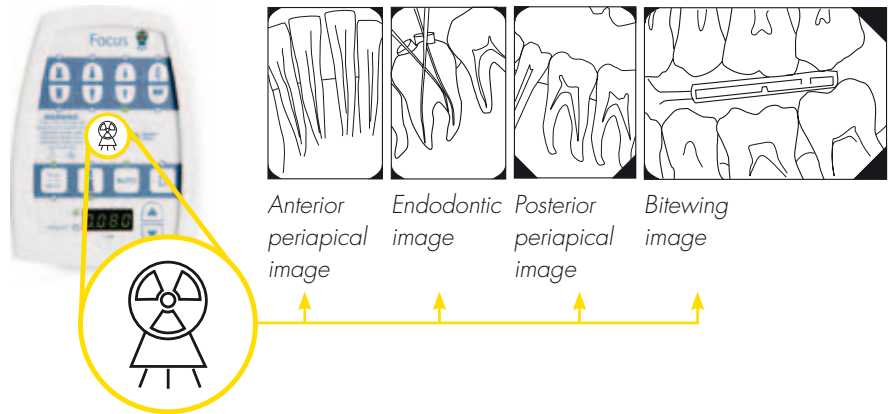
Scale 1:1

# The simplest workflow

## Set it and forget it

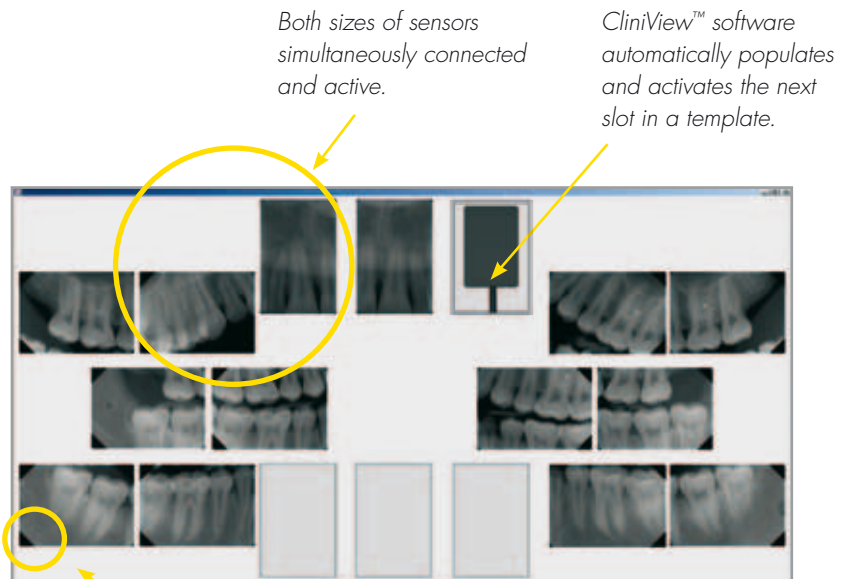
Take almost every intraoral image with just one X-ray setting. Snapshot's wide dynamic range provides superior images of different parts of the dentition without altering the settings on your X-ray device.

**Just press one button.**



## Simplified capture of multiple images

Snapshot's imaging software is a sophisticated tool for taking an image series (template). The software guides you through the Full Mouth Series and automatically orients the images. Two sizes of sensors can be active at the same time, which allows changing between sensors without interruptions.

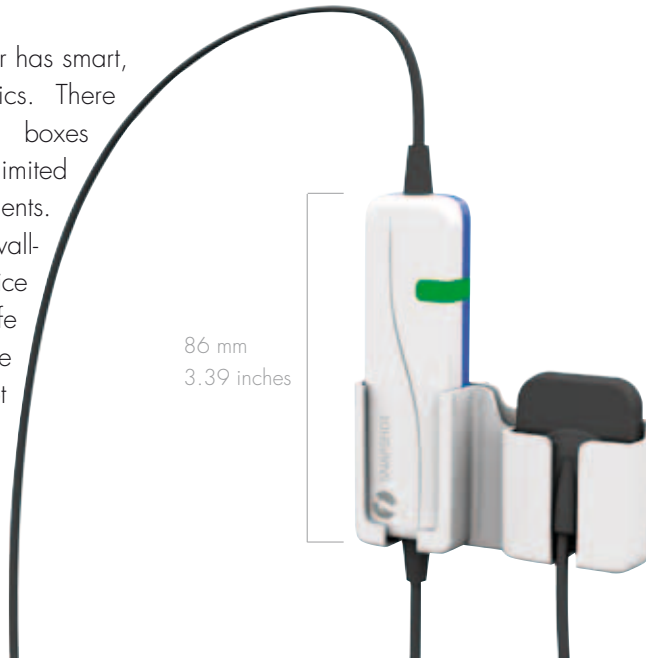


Snapshot is compatible with most imaging softwares through its TWAIN driver.

Auto-orientation sets images automatically into the right position.

# Truly portable sensor with a small footprint

The Snapshot sensor has smart, integrated electronics. There are no separate boxes lying around in limited workspace environments. A convenient wall-mounted storage device provides you a safe and convenient place to store the Snapshot when not in use.



Snapshot Sensor size 1  
37 x 26 mm  
1.46 x 1.02 inches

Snapshot Sensor size 2  
44 x 31 mm  
1.73 x 1.22 inches

Film size 2  
41 x 31 mm  
1.66 x 1.22 inches

Scale 1:1

## Ready for use automatically

Snapshot is ready for use just by plugging the USB cable into any computer having a supported Windows operating system. The sensor is detected automatically and all needed drivers are copied directly from the sensor without user action. This, combined with the absence of a tabletop electronics unit, make sharing the sensor between operatories particularly convenient.

**Plug and play!**

**Transferring Snapshot from one room to another is simpler than ever. Forget separate electronics.**

### Move the sensor



### Plug in the sensor



# Best-in-class clinical results

The new, sophisticated Snapshot sensor design produces up to 20 lp/mm true resolution (26,3 lp/mm theoretical). You get razor-sharp images, with the low noise typical of CMOS technology. This provides uncompromised diagnostic visibility and unsurpassed image quality. A wide dynamic range and an anti-blooming CMOS chip ensure successful images time after time.

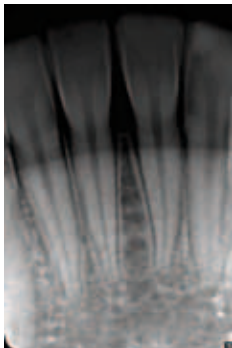
You can distinguish up to 20 lp/mm from an image when using CliniView™ software.



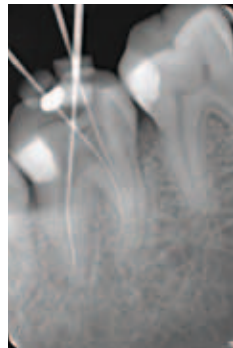
## Why CMOS?

- Lower noise ensures razor-sharp images
- Small, 19µm pixel size provides high resolution
- CMOS chip will not bloom even in the event of overexposure

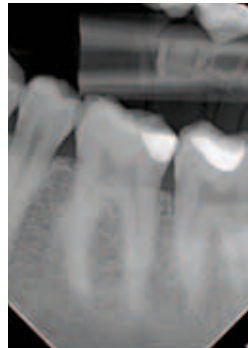
## A perfect tool for all intraoral purposes



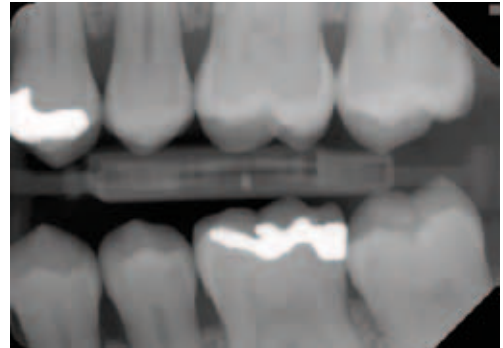
Superior resolution in periapical region ensures accurate diagnosis.




Precise location of file can be seen during endodontic treatment.



The difference between enamel and dentin stands out sharply.



Excellent contrast and sharpness, essential for diagnosing caries.

- 
- ↔ The simplest workflow
  - ↔ Best-in-class clinical results
  - ↔ Truly portable sensor with a small footprint
  - ↔ Plug and play

**S** Snapshot.  
Perfect image. So simple.

## Snapshot technical specification

### Snapshot

|                   |  |
|-------------------|--|
| Technology:       | CMOS   |
| Pixel size:       | 19µm x19µm                                   |
| Sealing:          | IP44, CMOS sensor IP67 (watertight)          |
| Resolution:       | 26,3 lp/mm theoretical                       |
| Connection:       | USB 2.0 High speed                           |
| Imaging software: | CliniView™ XV (USA), CliniView™ 8.0 or later |
|                   | TWAIN driver                                 |
| Operating system: | Windows® 7, Windows® Vista or Windows® XP    |

| DIMENSIONS           | Sensor size 1    | Sensor size 2    |           |
|----------------------|------------------|------------------|-----------|
| Active area:         | 1580 x 1050      | 1916 x 1358      | pixels    |
| Active area:         | 30,0 x 20,0      | 36,5 x 25,8      | mm        |
|                      | 1.18 x 0.79      | 1.44 x 1.02      | inches    |
| Housing:             | 37 x 26          | 44 x 31          | mm        |
|                      | 1.46 x 1.02      | 1.73 x 1.22      | inches    |
| Sensor cable length: | nominal 40/15.75 | nominal 40/15.75 | cm/inches |
| USB cable length:    | nominal 3/118.11 | nominal 3/118.11 | m/inches  |

| DIMENSIONS | Sensor unit                                  |
|------------|--|
| Size:      | 86 x 25 x 14 mm<br>3.39 x 0.98 x 0.55 inches |
| Weight:    | 120 g/ .26 lbs                               |

**INSTRUMENTARIUM DENTAL** develops, manufactures and markets high-tech systems and solutions for dental and maxillo-facial imaging. We work in close co-operation with dental professionals, universities and other research centers in our quest to develop solutions that will meet and exceed the expectations of our customers. As the establisher of panoramic X-ray imaging we are committed to providing high clinical performance while still maintaining simplicity, ease of use and workflow efficiency.

The Instrumentarium Dental product portfolio consists of a full range of premium quality imaging solutions for both intraoral and extraoral imaging. For more detailed information about our products please visit [www.instrumentariumdental.com](http://www.instrumentariumdental.com).

Instrumentarium Dental reserves the right to make changes in specifications and features shown herein, or discontinue the product described at any time without notice or obligation. Contact your Instrumentarium Dental Representative for the most current information. CE marked according to Medical Device Directive (MDD) 93/42/EEC. Electrical safety according to IEC 60601-1. Operations comply with ISO 13485:2003, ISO 9001:2008, and ISO 14001:2004.

[www.instrumentariumdental.com](http://www.instrumentariumdental.com)

## Headquarters

Instrumentarium Dental  
Nahkelantie 160  
P.O.Box 20  
FI-04301 Tuusula  
Finland  
Tel. +358 45 7882 2000  
Fax +358 45 7882 2560

## USA

Instrumentarium Dental Inc.  
300 West Edgerton Avenue  
Milwaukee, Wisconsin 53207  
U.S.A  
Tel. +1 800 558 6120  
Fax +1 414 481 8665

© 2011 Instrumentarium Dental  
72199-3